

FUNCTION OF THE ORGANELLES

Name

KEY

Which organelle performs each of the following functions within the cell?

Function

Organelle

1. Controls the movement into and out of the cell
2. Watery material which contains many of the materials involved in cell metabolism
3. Serves as a pathway for the transport of materials throughout the cell; also associated with synthesis and storage
4. Serves as the control center for cell metabolism and reproduction
5. Sites of protein synthesis
6. Involved in the digestion of food within the cell
7. The "powerhouse" of the cell
8. Packages and secretes the products of the cell
9. Involved in cell division in animal cells
10. Fluid filled organelles enclosed by a membrane; contains stored food or wastes
11. Site of the production of ribosomes
12. Controls movement into and out of the nucleus
13. Gives the cell its shape and provides protection; not found in animal cells
14. Hairlike structures with the capacity for movement
15. A long, hairlike structure used for movement
16. Site of photosynthesis
17. During cytokinesis, the new cell wall that begins to form in the middle, dividing the two sides
18. rod-shaped bodies that carry genetic information

1. Membrane
2. Cytoplasm
3. E.R
4. Nucleus
5. Ribosome
6. Lysosome
7. Mitochondria
8. Golgi
9. Centrioles
10. Vacuole
11. Rough Nucleus
12. Nuclear
13. Cell wall
14. cilia
15. Flagella
16. chloroplast
17. —
18. chromosomes

PARTS OF THE CELL—MATCHING

Name _____

Match the descriptions in Column I with the name in Column II.

Column I

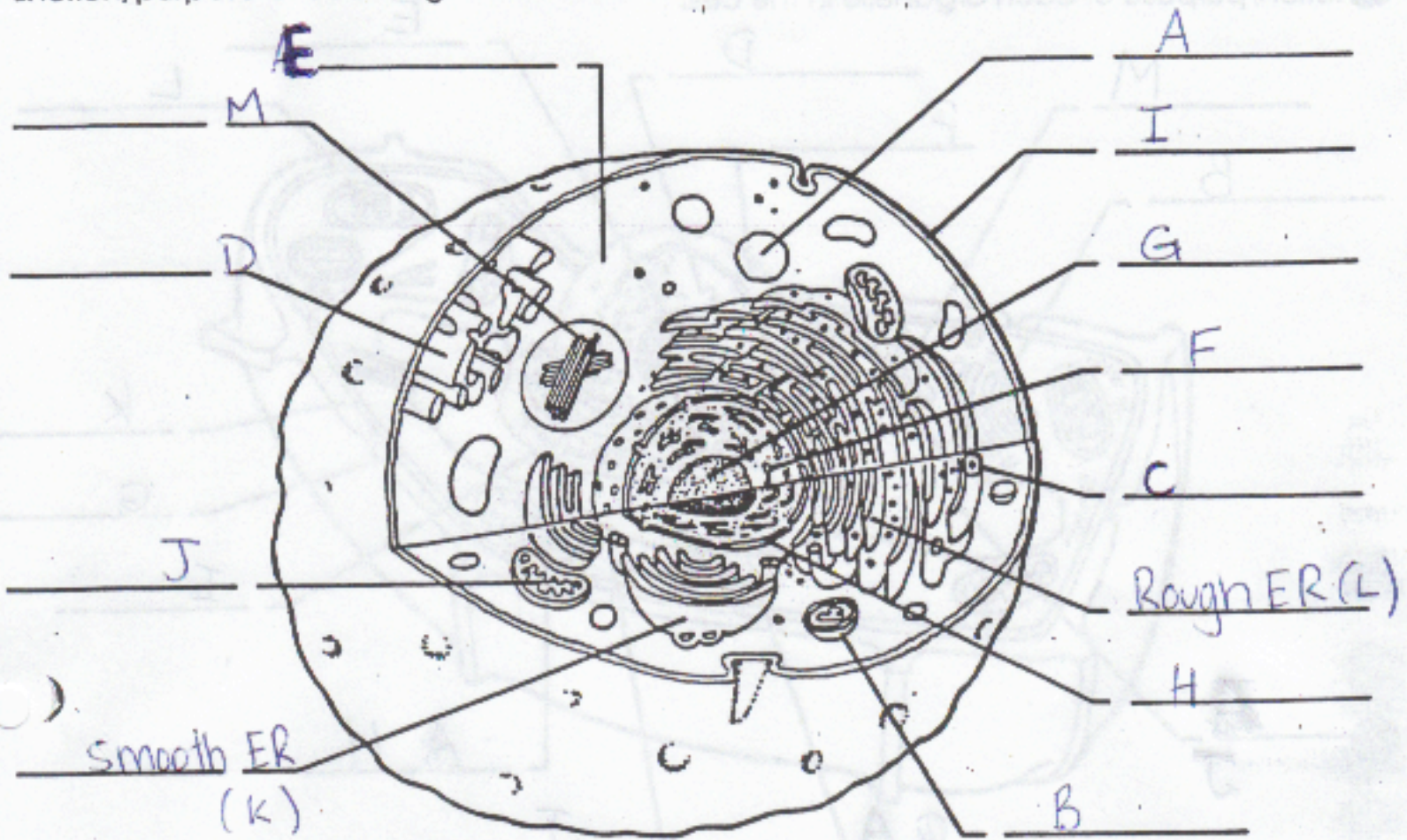
Column II

- | | |
|--|--------------------------------------|
| <u>G</u> 1. holds nucleus together | a. Golgi bodies |
| <u>PF</u> 2. surface for chemical activity | b. nucleus |
| <u>P</u> 3. units of heredity | c. chromosomes |
| <u>O</u> 4. digestion center | d. vacuole |
| <u>E</u> 5. where proteins are made | e. ribosomes |
| <u>H</u> 6. structures involved in mitosis in animal cells only | f. endoplasmic reticulum |
| <u>T</u> 7. microscopic cylinders that support and give the cell shape | g. nuclear membrane |
| <u>M</u> 8. shapes and supports a plant cell | h. centrioles |
| <u>A</u> 9. stores and releases chemicals | i. cytoplasm |
| <u>S</u> 10. food for plant cells is made here | j. chlorophyll |
| <u>R</u> 11. spherical body within nucleus | k. chloroplasts |
| <u>L</u> 12. controls entry into and out of cell | l. cell (plasma) membrane |
| <u>K</u> 13. traps light and is used to produce food for plants | m. cell wall |
| <u>B</u> 14. chromosomes are found here | n. mitochondria |
| <u>I</u> 15. jellylike substance within cell | o. lysosome |
| <u>C</u> 16. contains code which guides all cell activities | p. genes |
| <u>Q</u> 17. minute hole in nuclear membrane | q. nuclear pore |
| <u>N</u> 18. "powerhouse" of cell | r. nucleolus |
| <u>DI</u> 19. contains water and dissolved minerals | s. plastid |
| <u>J</u> 20. stores food or contains pigment | t. microtubule |

ANIMAL CELLS

Name _____

Label the organelles in the diagram below of a typical animal cell. Describe the function/purpose of each organelle in the cell.



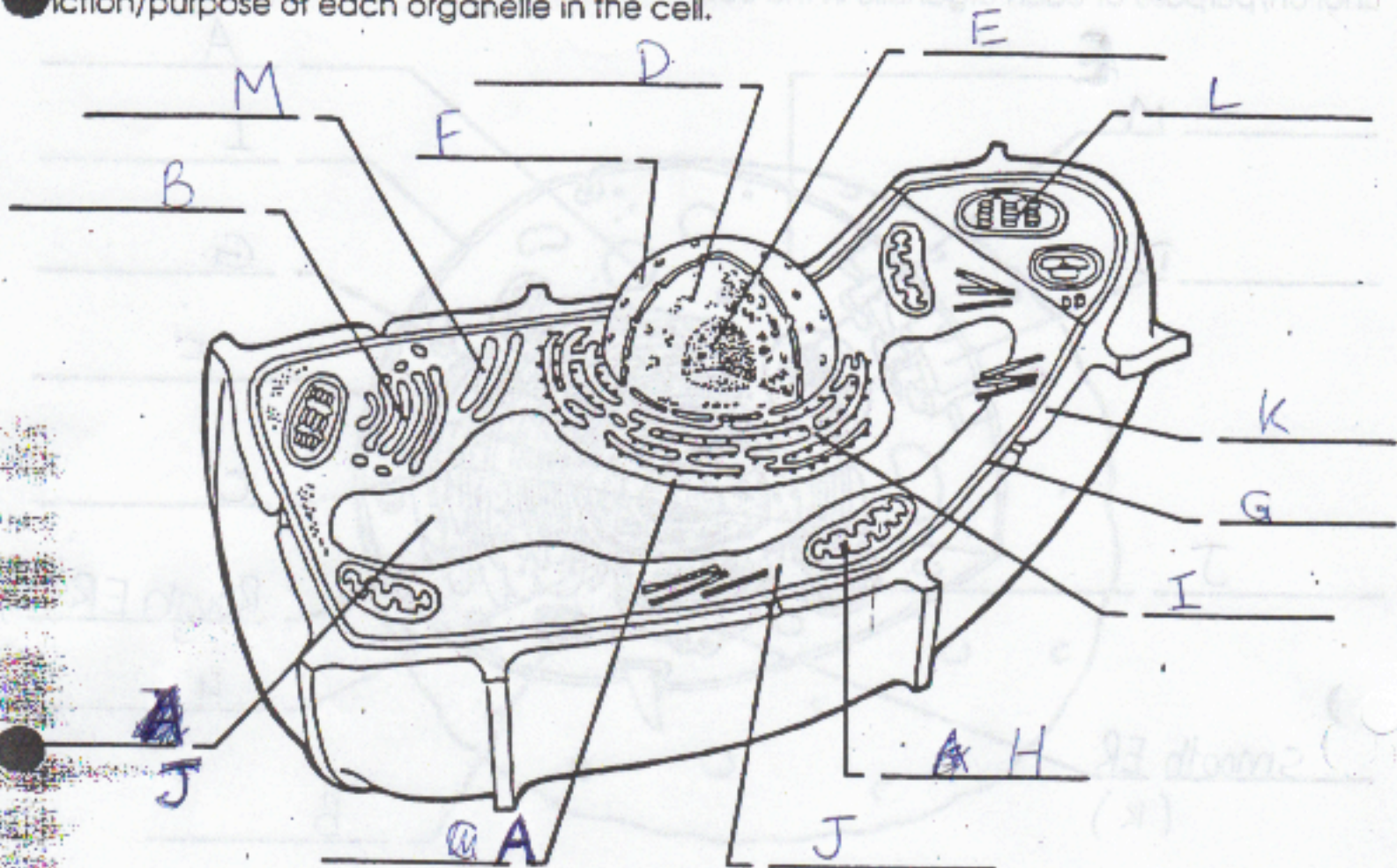
- a. vacuole _____
- b. lysosome _____
- c. ribosomes _____
- d. Golgi complex _____
- e. cytoplasm _____
- f. nucleus _____
- g. nucleolus _____
- h. nuclear membrane _____
- i. cell (plasma) membrane _____
- j. mitochondria _____
- k. smooth endoplasmic reticulum _____
- l. rough endoplasmic reticulum _____
- m. centriole _____

PLANT CELLS

Name

KEY

Label the organelles in the diagram below of a typical plant cell. Describe the function/purpose of each organelle in the cell.



- a. ribosomes _____
- b. Golgi complex _____
- c. cytoplasm _____
- d. nucleus _____
- e. nucleolus _____
- f. nuclear membrane _____
- g. cell (plasma) membrane _____
- h. mitochondria _____
- i. rough endoplasmic reticulum _____
- j. vacuole _____
- k. cell wall _____
- l. chloroplast _____
- m. smooth endoplasmic reticulum _____